



# Quick Fixing Guide

## KISS® Bolted

Bolted Aquasign-KISS® markers are supplied with the bolt holes drilled per customer's specification, along with a cartridge of Biohesive® 225.

**DO NOT apply Biohesive® to the back of the marker, as the adhesive is required as a sealant only.**



### Equipment

The following equipment is recommended during installation of KISS® bolted markers;



Before you begin, remove the tip from the Biohesive® 225 cartridge, cut the nozzle to create a minimum 4mm bead and insert into the application gun

### Protective Covers

The yellow protective cover supplied should remain in place throughout the installation process.

#### Solis® UV-Stable Markers

- Once the installation is complete, Solis® protective covers can be removed at anytime as they do not need protection from sunlight.

#### Altus™ Fluorescent Markers

- The protective covers on Altus™ markers must be secured with duct tape until the equipment is ready for deployment. This is to prevent the fluorescent pigments fading when exposed to sunlight.

### Surface Preparation

- Place the Aquasign® into position and mark in each of the bolt holes
- Using suitable equipment for the substrate, drill into the surface where the holes were marked
- Clean the surface area using the wipes provided





# Quick Fixing Guide

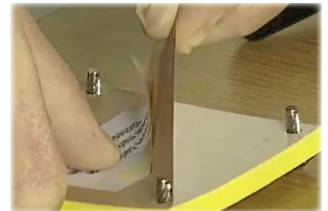
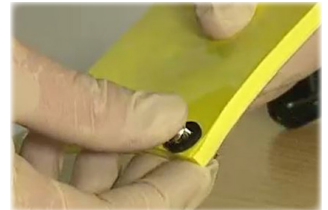
## KISS® Bolted

### Installation

All steps in installation process **MUST** be completed consecutively and markers **MUST** not be left without the Biohesive® 225 seal being applied.

#### Step 1: Installation

- Place a washer and bolt into each hole on the marker
- Peel the brown backing paper from the Aquasign® marker, taking care not to lift the self-adhesive layer
- Place the Aquasign® marker into position, locating each pre-drilled hole on the structure
- Once in place, **DO NOT** attempt to reposition, as this will weaken the adhesive bond
- Using a suitable tool for the bolt type, secure the bolts
- Roller the marker surface to remove any air bubbles



#### Step 2: Sealing Bead

- Immediately apply a **complete** bead of Biohesive® 225 around the marker
- Using a finger, smooth the bead to the marker edges to create a water-tight seal
- Complete the installation by removing the masking tape

### Additional Information

For more information on the KISS® range, visit our Client Portal [www.aquasign.com](http://www.aquasign.com).

[Full Installation Procedure](#) | [Product Datasheet](#)

[Product Guarantee](#) | [Safety Datasheet](#) | [Full Testing Reports](#)